

HIGH PRESSURE QUICK COUPLINGS

HQP SERIES 10,000 PSIG (690 BAR)



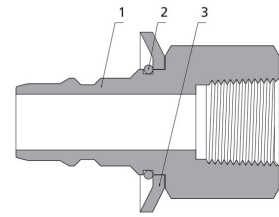
FEATURES

- Maximum working pressure: 10,000 psig (690 bar).
- Working temperature with Fluorocarbon FKM O-rings: 0°F to 400°F (-17.8°C to 204°C).
- Material: high tensile 316 SS.
- Flow coefficient (Cv) up to: 8.2
- Easy and quick connection to hoses and fixed ports.
- Push-and-pull type quick coupling without check valve.
- Sturdy locking mechanism with large contact area to ensure reliable stem retainment.

STANDARD MATERIALS OF CONSTRUCTION

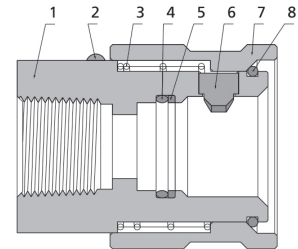
Nipple

Item	Component	Material / ASTM Specification
1	Stem	316 SS / A479
2	Wire Ring	Stainless Steel
3	Pull Piece	316 SS / A276



Coupler

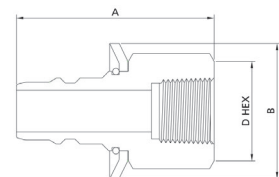
Item	Component	Material / ASTM Specification
1	Body	316 SS / A479
2	Grooved Pin	Stainless Steel
3	Spring	300 Series SS
4	O-ring	Fluorocarbon FKM
5	Retaining Ring	PTFE
6	Locking Block	Stainless Steel
7	Nut	316 SS / A479
8	Wire Ring	Stainless Steel



TECHNICAL DATA AND DIMENSIONS

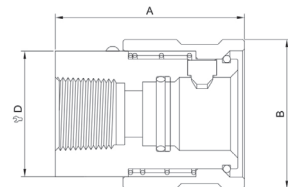
Nipple

#	Connection Type	Dimensions - in. (mm)			Pressure Room Temperature psig (bar)
		A	B	D	
HQPSS-FNS6-NP	FNS6	2.20 (56.0)	1.61 (41.0)	1.19 (30.2)	10,000 (690)
HQPSS-FNS8-NP	FNS8	2.36 (60.0)	1.61 (41.0)	1.19 (30.2)	



Coupler

#	Connection Type	Dimensions - in. (mm)			Pressure Room Temperature psig (bar)
		A	B	D	
HQPSS-FNS6-CP	FNS6	2.05 (52.0)	1.60 (40.7)	1.19 (30.2)	10,000 (690)
HQPSS-FNS8-CP	FNS8	2.05 (52.0)	1.60 (40.7)	1.19 (30.2)	





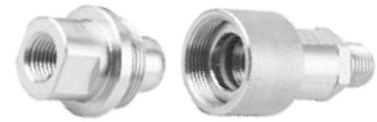
HQP SERIES 10,000 PSIG (690 BAR) PART NUMBER DESCRIPTION

HQC SS - 6MP6 - NP1

SERIES		BODY MATERIAL		CONNECTION TYPE AND SIZE		PRODUCT TYPE	
HQP	SS	316 SS	NS4	1/4" Male NPT	CP	Coupler	
HQB	4P	S17400	NS6	3/8" Male NPT	NP	Nipple	
HQS			NS8	1/2" Male Male	NP1	HQC Series Nipple without Check Valve	
HQC			FNS4	1/4" Female NPT			
			FNS6	3/8" Female NPT			
			FNS8	1/2" Female NPT			
			AN4	1/4" Male JIC			
			AN6	3/8" Male JIC			
			AN8	1/2" Male JIC			
			HBP4	Male G1/4"			
			HBP6	Male G3/8"			
			HBP8	Male G1/2"			
			2MP4	1/4" Male MP			
			2MP6	3/8" Male MP			
			2MP9	9/16" Male MP			
			6MP4	1/4" Male HP			
			6MP6	3/8" Male HP			
			6MP9	9/16" Male HP			
			HM9	9/16" Male Type M			
			HM12	3/4" Male Type M			
			HM16	1" Male Type M			

HIGH PRESSURE QUICK COUPLINGS

HQB SERIES 10,000 PSIG (690 BAR)



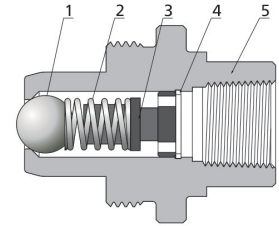
FEATURES

- Maximum working pressure: 10,000 psig (690 bar).
- Working temperature with Fluorocarbon FKM O-rings: 0°F to 400°F (-17.8°C to 204°C).
- Material: high tensile 316 SS and 17-4PH.
- Flow coefficient (Cv) up to: 0.53
- Easy and quick connection to hoses and fixed ports.
- Screw type quick coupling with check valve.
- Withstand full working pressure when disconnected.
- Check valve with metal sealing, without guarantee of full gas impermeability.

STANDARD MATERIALS OF CONSTRUCTION

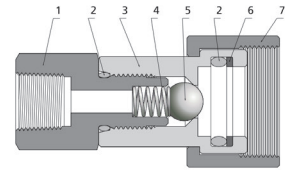
Nipple

Item	Component	Material / ASTM Specification
1	Ball	Stainless Steel
2	Spring	300 Series SS
3	Seat	316 SS / A479
4	Retaining Ring	Stainless Steel
5	Body	17-4PH / A564



Coupler

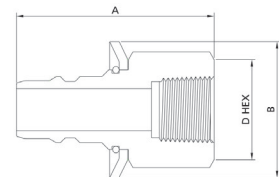
Item	Component	Material / ASTM Specification
1	Body	316 SS / A479
2	O-ring	Fluorocarbon FKM
3	Housing	17-4PH / A564
4	Spring	300 Series SS
5	Ball	Stainless Steel
6	Retaining Ring	PTFE
7	Nut	17-4PH / A564



TECHNICAL DATA AND DIMENSIONS

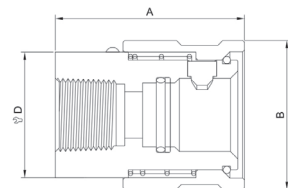
Nipple

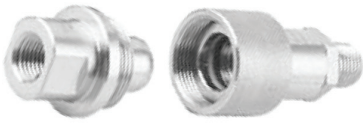
#	Connection Type	Dimensions - in. (mm)			Pressure Room Temperature psig (bar)
		A	B	D	
HQB4P-FNS4-NP	FNS4	1.54 (39.2)	1.18 (30.0)	0.75 (19.0)	10,000 (690)
HQB4P-FNS6-NP	FNS6	1.54 (39.2)	1.18 (30.0)	0.94 (23.8)	



Coupler

#	Connection Type	Dimensions - in. (mm)			Pressure Room Temperature psig (bar)
		A	B	D	
HQB4P-FNS4-CP	FNS4	2.46 (62.4)	1.18 (30.0)	0.87 (22.2)	10,000 (690)
HQB4P-FNS6-CP	FNS6	2.46 (62.4)	1.18 (30.0)	0.94 (23.8)	





HQB SERIES 10,000 PSIG (690 BAR) PART NUMBER DESCRIPTION

HQC SS - 6MP6 - NP1

SERIES		BODY MATERIAL		CONNECTION TYPE AND SIZE		PRODUCT TYPE	
HQP	SS	316 SS	NS4	1/4" Male NPT	CP	Coupler	
HQB	4P	S17400	NS6	3/8" Male NPT	NP	Nipple	
HQS			NS8	1/2" Male Male	NP1	HQC Series Nipple without Check Valve	
HQC			FNS4	1/4" Female NPT			
			FNS6	3/8" Female NPT			
			FNS8	1/2" Female NPT			
			AN4	1/4" Male JIC			
			AN6	3/8" Male JIC			
			AN8	1/2" Male JIC			
			HBP4	Male G1/4"			
			HBP6	Male G3/8"			
			HBP8	Male G1/2"			
			2MP4	1/4" Male MP			
			2MP6	3/8" Male MP			
			2MP9	9/16" Male MP			
			6MP4	1/4" Male HP			
			6MP6	3/8" Male HP			
			6MP9	9/16" Male HP			
			HM9	9/16" Male Type M			
			HM12	3/4" Male Type M			
			HM16	1" Male Type M			

HIGH PRESSURE QUICK COUPLINGS

HQS SERIES 20,000 PSIG (1379 BAR)



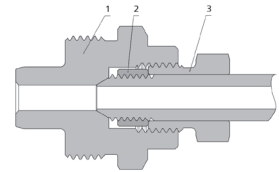
FEATURES

- Maximum working pressure: 20,000 psig (1379 bar).
- Working temperature with Fluorocarbon FKM O-rings: 0°F to 400°F (-17.8°C to 204°C).
- Material: high tensile 316 SS and 17-4PH.
- Flow coefficient (Cv) up to: 3.6
- Easy and quick connection to hoses and fixed ports.
- Screw type quick coupling without check valve.

STANDARD MATERIALS OF CONSTRUCTION

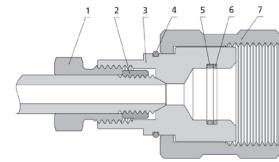
Nipple

Item	Component	Material / ASTM Specification
1	Body	316 SS / A479
2	Collar	316 SS / A479
3	Gland	316 SS / A479



Coupler

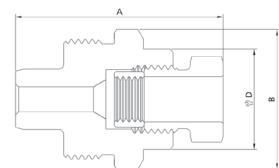
Item	Component	Material / ASTM Specification
1	Collar	316 SS / A479
2	Gland	316 SS / A479
3	Body	17-4PH / A564
4	Wire Ring	Stainless Steel
5	O-ring	Fluorocarbon FKM
6	Retaining Ring	PTFE
7	Nut	316 SS / A479



TECHNICAL DATA AND DIMENSIONS

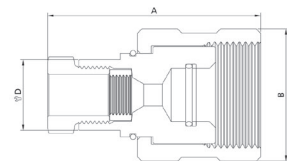
Nipple

#	Connection Type	Dimensions - in. (mm)			Pressure Room Temperature
		A	B	D	
HQSSS-2FH9-NP	2FH9	3.28 (62.0)	1.74 (44.2)	1.25 (31.75)	20,000 (1379)
HQSSS-FNS4-NP	FNS4	2.00 (50.5)	1.74 (44.2)	1.25 (31.75)	15,000 (1034)
HQSSS-HBP8-NP	HBP8	2.54 (64.5)	1.00 (25.4)	0.94 (23.80)	20,000 (1379)



Coupler

#	Connection Type	Dimensions - in. (mm)			Pressure Room Temperature
		A	B	D	
HQSSS-2FH9-CP	2FH9	3.03 (77.0)	1.87 (47.5)	1.00 (25.40)	20,000 (1379)
HQSSS-FNS4-CP	FNS4	2.59 (65.7)	1.87 (47.5)	1.00 (25.40)	15,000 (1034)
HQSSS-HBP8-CP	HBP8	3.03 (77.0)	1.31 (33.3)	1.19 (30.16)	20,000 (1379)





HQS SERIES 20,000 PSIG (1379 BAR) PART NUMBER DESCRIPTION

HQC SS - 6MP6 - NP1

SERIES		BODY MATERIAL		CONNECTION TYPE AND SIZE		PRODUCT TYPE	
HQP	SS	316 SS	NS4	1/4" Male NPT	CP	Coupler	
HQB	4P	S17400	NS6	3/8" Male NPT	NP	Nipple	
HQS			NS8	1/2" Male Male	NP1	HQC Series Nipple without Check Valve	
HQC			FNS4	1/4" Female NPT			
			FNS6	3/8" Female NPT			
			FNS8	1/2" Female NPT			
			AN4	1/4" Male JIC			
			AN6	3/8" Male JIC			
			AN8	1/2" Male JIC			
			HBP4	Male G1/4"			
			HBP6	Male G3/8"			
			HBP8	Male G1/2"			
			2MP4	1/4" Male MP			
			2MP6	3/8" Male MP			
			2MP9	9/16" Male MP			
			6MP4	1/4" Male HP			
			6MP6	3/8" Male HP			
			6MP9	9/16" Male HP			
			HM9	9/16" Male Type M			
			HM12	3/4" Male Type M			
			HM16	1" Male Type M			

HIGH PRESSURE QUICK COUPLINGS

HQC SERIES 30,000 PSIG (2068 BAR)

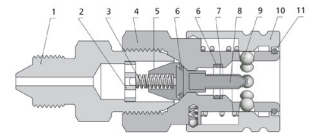


FEATURES

- Maximum working pressure: 30,000 psig (2068 bar).
- Working temperature with Fluorocarbon FKM O-rings: 0°F to 400°F (-17.8°C to 204°C).
- Material: high tensile 316 SS.
- Flow coefficient (Cv) up to: 0.66
- Nipple with check valve.
- Withstand full working pressure when disconnected.

STANDARD MATERIALS OF CONSTRUCTION

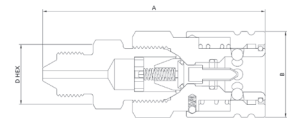
Item	Component	Material / ASTM Specification
1	Body	316 SS / A479
2	Seat	316 SS / A479
3	Spring	300 Series SS
4	Housing	316 SS / A479
5	Valve Head	316 SS / A479
6	O-ring	Fluorocarbon FKM
7	Retaining Ring	PTFE
8	Valve Stem	316 SS / A479
9	Ball	Stainless Steel
10	Nut	316 SS / A479



TECHNICAL DATA AND DIMENSIONS

Nipple

#	Connection Type	Dimensions - in. (mm)			Pressure Room Temperature
		A	B	D	
HQCSS-NS4-CP	NS4	3.48 (88.5)	1.44 (36.5)	1.00 (25.4)	15,000 (1034)
HQCSS-NS6-CP	NS6	3.48 (88.5)	1.44 (36.5)	1.00 (25.4)	
HQCSS-NS8-CP	NS8	3.68 (93.5)	1.44 (36.5)	1.00 (25.4)	
HQCSS-FNS4-CP	FNS4	3.17 (80.5)	1.44 (36.5)	1.00 (25.4)	
HQCSS-FNS6-CP	FNS6	3.27 (83.0)	1.44 (36.5)	1.13 (28.6)	
HQCSS-FNS8-CP	FNS8	3.56 (90.5)	1.44 (36.5)	1.38 (34.9)	
HQCSS-AN4-CP	AN4	3.48 (88.5)	1.44 (36.5)	1.00 (25.4)	
HQCSS-AN6-CP	AN6	3.48 (88.5)	1.44 (36.5)	1.00 (25.4)	
HQCSS-AN8-CP	AN8	3.58 (91.0)	1.44 (36.5)	1.00 (25.4)	20,000 (1379)
HQCSS-HBP4-CP	HBP4	3.37 (85.5)	1.44 (36.5)	1.00 (25.4)	
HQCSS-HBP6-CP	HBP6	3.41 (86.5)	1.44 (36.5)	1.00 (25.4)	
HQCSS-HBP8-CP	HBP8	3.48 (88.5)	1.44 (36.5)	1.00 (25.4)	
HQCSS-2MP4-CP	2MP4	3.62 (92.0)	1.44 (36.5)	1.00 (25.4)	30,000 (2068)
HQCSS-2MP6-CP	2MP6	3.76 (95.5)	1.44 (36.5)	1.00 (25.4)	
HQCSS-2MP9-CP	2MP9	3.95 (100.5)	1.44 (36.5)	1.00 (25.4)	
HQCSS-6MP4-CP	6MP4	3.54 (92.0)	1.44 (36.5)	1.00 (25.4)	
HQCSS-6MP6-CP	6MP6	3.80 (96.5)	1.44 (36.5)	1.00 (25.4)	
HQCSS-6MP9-CP	6MP9	3.98 (101.0)	1.44 (36.5)	1.19 (30.2)	
HQCSS-HM9-CP	HM9	3.43 (87.0)	1.44 (36.5)	1.00 (25.4)	
HQCSS-HM12-CP	HM12	3.56 (90.5)	1.44 (36.5)	1.00 (25.4)	
HQCSS-HM16-CP	HM16	3.56 (90.5)	1.44 (36.5)	1.19 (30.2)	





HIGH PRESSURE QUICK COUPLINGS

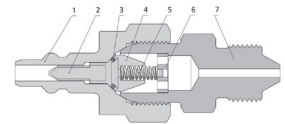
HQC SERIES WITH CHECK VALVE

FEATURES

- Maximum working pressure: 30,000 psig (2068 bar).
- Working temperature with Fluorocarbon FKM O-rings: 0°F to 400°F (-17.8°C to 204°C).
- Material: high tensile 316 SS.
- Flow coefficient (Cv) up to: 0.66
- Nipple with check valve.
- Withstand full working pressure when disconnected.

STANDARD MATERIALS OF CONSTRUCTION

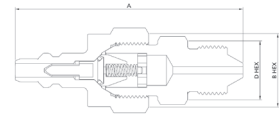
Item	Component	Material / ASTM Specification
1	Stem	316 SS / A479
2	Valve Stem	316 SS / A479
3	O-ring	Fluorocarbon FKM
4	Valve Head	316 SS / A479
5	Spring	300 Series SS
6	Seat	316 SS / A479
7	Body	316 SS / A479



TECHNICAL DATA AND DIMENSIONS

Nipple

#	Connection Type	Dimensions - in. (mm)			Pressure Room Temperature
		A	B	D	
HQCSS-NS4-NP	NS4	3.52 (89.5)	1.00 (25.4)	1.25 (31.8)	15,000 (1034)
HQCSS-NS6-NP	NS6	3.52 (89.5)	1.00 (25.4)	1.25 (31.8)	
HQCSS-NS8-NP	NS8	3.70 (94.0)	1.00 (25.4)	1.25 (31.8)	
HQCSS-FNS4-NP	FNS4	3.19 (81.0)	1.00 (25.4)	1.25 (31.8)	
HQCSS-FNS6-NP	FNS6	3.31 (84.0)	1.13 (28.6)	1.25 (31.8)	
HQCSS-FNS8-NP	FNS8	3.58 (91.0)	1.38 (34.9)	1.25 (31.8)	
HQCSS-AN4-NP	AN4	3.50 (89.0)	1.00 (25.4)	1.25 (31.8)	
HQCSS-AN6-NP	AN6	3.50 (89.0)	1.00 (25.4)	1.25 (31.8)	
HQCSS-AN8-NP	AN8	3.43 (92.0)	1.00 (25.4)	1.25 (31.8)	
HQCSS-HBP4-NP	HBP4	3.39 (86.0)	1.00 (25.4)	1.25 (31.8)	
HQCSS-HBP6-NP	HBP6	3.43 (87.0)	1.00 (25.4)	1.25 (31.8)	
HQCSS-HBP8-NP	HBP8	3.50 (89.0)	1.00 (25.4)	1.25 (31.8)	
HQCSS-2MP4-NP	2MP4	3.64 (92.5)	1.00 (25.4)	1.25 (31.8)	
HQCSS-2MP6-NP	2MP6	3.78 (96.0)	1.00 (25.4)	1.25 (31.8)	
HQCSS-2MP9-NP	2MP9	3.98 (101.0)	1.00 (25.4)	1.25 (31.8)	
HQCSS-6MP4-NP	6MP4	3.58 (91.0)	1.00 (25.4)	1.25 (31.8)	30,000 (2068)
HQCSS-6MP6-NP	6MP6	3.84 (97.5)	1.00 (25.4)	1.25 (31.8)	
HQCSS-6MP9-NP	6MP9	4.00 (101.5)	1.19 (30.2)	1.25 (31.8)	
HQCSS-HM9-NP	HM9	3.46 (88.0)	1.00 (25.4)	1.25 (31.8)	
HQCSS-HM12-NP	HM12	3.58 (91.0)	1.00 (25.4)	1.25 (31.8)	
HQCSS-HM16-NP	HM16	3.60 (91.5)	1.19 (30.2)	1.25 (31.8)	



HIGH PRESSURE QUICK COUPLINGS

HQC SERIES WITHOUT CHECK VALVE



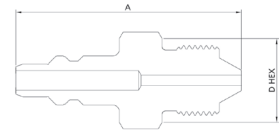
FEATURES

- Maximum working pressure: 30,000 psig (2068 bar).
- Material: high tensile 316 SS.
- Flow coefficient (Cv) up to: 0.66
- Nipple without check valve.

TECHNICAL DATA AND DIMENSIONS

Nipple

#	Connection Type	Dimensions - in. (mm)		Pressure Room Temperature
		A	D	
HQCSS-NS4-NP1	NS4	3.52 (89.5)	1.25 (31.8)	15,000 (1034)
HQCSS-NS6-NP1	NS6	3.52 (89.5)	1.25 (31.8)	
HQCSS-NS8-NP1	NS8	3.70 (94.0)	1.25 (31.8)	
HQCSS-FNS4-NP1	FNS4	3.19 (81.0)	1.25 (31.8)	
HQCSS-FNS6-NP1	FNS6	3.31 (84.0)	1.25 (31.8)	
HQCSS-FNS8-NP1	FNS8	3.58 (91.0)	1.25 (31.8)	
HQCSS-AN4-NP1	AN4	3.50 (98.0)	1.25 (31.8)	
HQCSS-AN6-NP1	AN6	3.50 (98.0)	1.25 (31.8)	
HQCSS-AN8-NP1	AN8	3.43 (92.0)	1.25 (31.8)	20,000 (1379)
HQCSS-HBP4-NP1	HBP4	3.39 (86.0)	1.25 (31.8)	
HQCSS-HBP6-NP1	HMP6	3.43 (87.0)	1.25 (31.8)	
HQCSS-HBP8-NP1	HBP8	3.50 (98.0)	1.25 (31.8)	
HQCSS-2MP4-NP1	2MP4	3.64 (92.5)	1.25 (31.8)	
HQCSS-2MP6-NP1	2MP6	3.78 (96.0)	1.25 (31.8)	30,000 (2068)
HQCSS-2MP9-NP1	2MP9	3.98 (101.0)	1.25 (31.8)	
HQCSS-6MP4-NP1	6MP4	3.58 (91.0)	1.25 (31.8)	
HQCSS-6MP6-NP1	6MP6	3.84 (97.5)	1.25 (31.8)	
HQCSS-6MP9-NP1	6MP9	4.00 (101.5)	1.25 (31.8)	
HQCSS-HM9-NP1	HM9	3.46 (88.0)	1.25 (31.8)	
HQCSS-HM12-NP1	HM12	3.58 (91.0)	1.25 (31.8)	30,000 (2068)
HQCSS-HM16-NP1	HM16	3.60 (91.5)	1.25 (31.8)	





IQC SERIES 30,000 PSIG (2068 BAR) PART NUMBER DESCRIPTION

HQC SS - 6MP6 - NP1

SERIES		BODY MATERIAL		CONNECTION TYPE AND SIZE		PRODUCT TYPE	
HQP	SS	316 SS	NS4	1/4" Male NPT	CP	Coupler	
HQB	4P	S17400	NS6	3/8" Male NPT	NP	Nipple	
HQS			NS8	1/2" Male Male	NP1	HQC Series Nipple without Check Valve	
HQC			FNS4	1/4" Female NPT			
			FNS6	3/8" Female NPT			
			FNS8	1/2" Female NPT			
			AN4	1/4" Male JIC			
			AN6	3/8" Male JIC			
			AN8	1/2" Male JIC			
			HBP4	Male G1/4"			
			HBP6	Male G3/8"			
			HBP8	Male G1/2"			
			2MP4	1/4" Male MP			
			2MP6	3/8" Male MP			
			2MP9	9/16" Male MP			
			6MP4	1/4" Male HP			
			6MP6	3/8" Male HP			
			6MP9	9/16" Male HP			
			HM9	9/16" Male Type M			
			HM12	3/4" Male Type M			
			HM16	1" Male Type M			