



547-4 / 2040N / 328-4 1/4" BEVERAGE DISPENSING

THERMOPLASTIC - MEDIUM PRESSURE

CO₂ and mixed gas applications

#											
	DN	size	mm	inch	mm	bar	psi	bar	psi	mm	kg/m
547-4 EXT	6	-04	6.3	1/4	12.1	215	3,100	860	12,400	100.0	0.09
2040N-04V74	6	-04	6.3	1/4	11.9	310	4,495	1240	17,980	40.0	0.16
328-4 EXT	6	-04	6.3	1/4	12.3	350	5,000	1400	20,000	100.0	0.15

APPLICATIONS

Specifically designed for CO₂ and mixed gas dispensing lines requiring food approval (F.D.A).

FEATURES

- Excellent flex fatigue resistance
- Fungus resistant
- FDA approved inner tube material
- Small bend radius

CONSTRUCTION - 547 EXT

Core tube: Polyester elastomer compound.
Pressure reinforcement: Polyester.
Cover: Polyurethane compound, pinpricked.
Colour: Grey.

CONSTRUCTION - 2040N

Core tube: Polyamide.
Pressure reinforcement: One braided layer of high tensile steel wire.
Cover: Polyurethane.
Colour: Grey / black.

CONSTRUCTION - 328 EXT

Core tube: Polyester elastomer compound.
Pressure reinforcement: Aramid.
Cover: Polyurethane compound, pinpricked.
Colour: Grey.

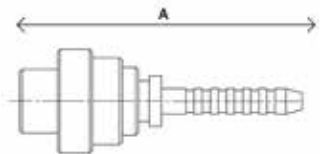
TEMPERATURE RANGE

-40°C up to +100°C.

FITTINGS

CO₂ Bottle connection insert to suit BS 341 No.8 nut

#						A
	DN	size	mm	inch		
ABD250	6	-04	6.4	1/4	-	53.5



CO₂ Female nut BS 341 No.8

#						A	
	DN	size	mm	inch			
ABD251	6	-04	6.4	1/4	21.8 Whitworth	21.0	28.0



Please Note: Variety of fittings in mild steel or stainless steel available, other fittings available on request. We reserve the right to make technical changes without notice.

547-4 / 2040N / 328-4

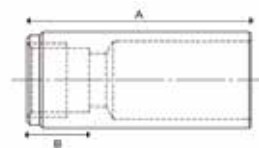
1/4" BEVERAGE DISPENSING



THERMOPLASTIC - MEDIUM PRESSURE

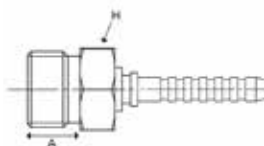
CO₂ Female knurled BS 341 No.8

#	Ø				W	A	B
	DN	size	mm	inch			
ABD253	6	-04	6.4	1/4	21.8 Whitworth	70.0	19.5



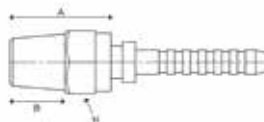
CO₂ Male fixed BS 341 No.8

#	Ø				W	A	H
	DN	size	mm	inch			
ABD249	6	-04	6.4	1/4	21.8 Whitworth	15.0	23.2



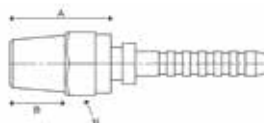
NPT Male fixed

#	Ø				W	A	B	H
	DN	size	mm	inch				
ABD255	6	-04	6.4	1/4	1/4 NPT Male	19.0	14.0	14.0



BSPT Male fixed

#	Ø				W	A	B	H
	DN	size	mm	inch				
ABD256	6	-04	6.4	1/4	1/4 BSPT	21.5	14.5	14.0



Plastic hand wheel to suit CO₂ and N₂ nut

#	Ø				W	A	H
	DN	size	mm	inch			
ABD950	-	-	-	-	-	-	28.0



Please Note: Variety of fittings in mild steel or stainless steel available, other fittings available on request. We reserve the right to make technical changes without notice.