

# 2440D / 2440N

## HYDRAULIC & WATER JETTING



### Hydraulic and water jetting applications

#	Ø				Ø		⌚		✂️		⤵️		Kg kg/m
	DN	size	mm	inch	mm	bar	psi	bar	psi	mm			
2440D-02V32	3	-02	3.0	1/8	7.9	2070	30,000	5180	75,000	100.0	0.12		
2440D-025V32	4	-025	4.0	5/32	10.4	2200	31,900	5500	79,750	100.0	0.21		
2440D-03V32	5	-03	4.8	3/16	11.5	1800	26,100	4500	65,250	130.0	0.28		
2440D-04V32	6	-04	6.4	1/4	12.5	1640	23,780	4100	59,450	155.0	0.33		
2440D-05V32	8	-05	8.1	5/16	15.1	1500	21,750	3750	54,375	175.0	0.44		
2440N-06V30	10	-06	9.7	3/8	19.4	1400	20,300	3500	50,750	190.0	0.73		
2440N-08V30	12	-08	12.8	1/2	22.5	1400	20,300	3500	50,750	200.0	0.95		
2440N-12V30	20	-12	19.6	3/4	30.0	1000	14,500	2500	36,250	250.0	1.39		
2440N-16V30	25	-16	25.0	1	37.0	900	13,050	2250	32,625	300.0	2.00		

### APPLICATIONS

Ultra high pressure service for the construction and shipbuilding industries and for general industrial cleaning applications. For use with petroleum or synthetic hydraulic fluids, gas and chemical fluids. Especially suitable for hydraulic bolt tensioning equipment, test rigs, as well as in offshore hydraulic and gas applications.

### FEATURES

- Industry standard on ultra high pressure thermoplastic applications
- Light weight and abrasion resistant thermoplastic hose
- Used in hydraulic flying lead bundles

### CONSTRUCTION

**Core tube:** DN 3-8: Polyoxymethylene; DN 10-25: Polyamide.  
**Pressure reinforcement:** Four spiral layers of maximum tensile steel wire.  
**Cover:** Polyamide.  
**Colour:** DN 3-8: blue; DN 10-25: black.

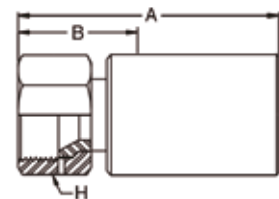
### TEMPERATURE RANGE

-10°C up to 100°C.

### FITTINGS

**JIC Female swivel fitting:** Stainless steel (AISI 316), other materials on request.

#	Ø				A	B	H	⌚	
	DN	size	mm	inch				mm	psi
106LX-6-04C	6	-04	6.4	1/4	9/16 - 18 UNF	55.0	23.0	19.0	865 12,500
106LX-6-06C	10	-06	9.5	3/8	9/16 - 18 UNF	59.0	18.0	22.0	690 10,000
106LX-8-06C	10	-06	9.5	3/8	3/4 - 16 UNF	59.0	19.0	24.0	865 12,500
106LX-8-08C	12	-08	12.7	1/2	3/4 - 16 UNF	64.0	21.0	27.0	690 10,000
106LX-10-08C	12	-08	12.7	1/2	1 - 12 UNF	85.0	41.0	24.0	810 11,700
106LX-16-12C	20	-12	19.0	3/4	1 5/16 - 12 UNF	109.0	43.0	41.0	630 9,100
106LX-16-16C	25	-16	25.4	1	1 5/16 - 12 UNF	96.0	42.0	41.0	560 8,100



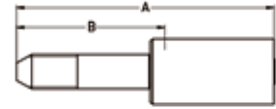
**Please Note:** Variety of fittings in mild steel or stainless steel available, other fittings available on request. We reserve the right to make technical changes without notice.



# 2440D / 2440N HYDRAULIC & WATER JETTING

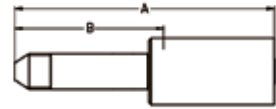
**High pressure metric tube nipple (LH thread):** High strength carbon steel, zinc plated.

#	Ø				📏	A	B	🕒	
	DN	size	mm	inch				bar	psi
1YMLX-6-05	8	-05	7.9	5/16	M14 x 1.5-LH	110.0	66.0	1500	21,750
1YMLX-11-08	12	-08	12.7	1/2	M18 x 1.5-LH	120.0	65.0	1300	18,850



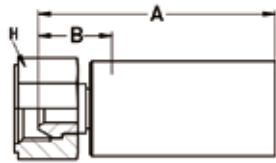
**Medium pressure tube nipple:** Special materials.

#	Ø				📏	A	B	🕒	
	DN	size	mm	inch				bar	psi
1Y2LX-3-04C	6	-04	6.4	1/4	3/8 - 24 UNF LH	109.0	65.0	1379	20,000
1Y2LX-9-5C	8	-05	7.9	5/16	9/16 - 18 LH	97.0	54.0	1379	20,000
1Y2LX-12-5C	8	-05	7.9	5/16	3/4 - 16 LH	95.0	52.0	1379	20,000
1Y2LX-9-6C	10	-06	9.5	3/8	9/16 - 18 LH	97.0	52.0	1379	20,000
1Y2LX-9-8C	12	-08	12.7	1/2	9/16 - 18 LH	107.0	56.0	1379	20,000
1Y2LX-12-8C	12	-08	22.7	1/2	3/4 - 16 LH	105.0	53.0	1379	20,000
1Y2LX-16-12C	20	-12	19.0	3/4	1 - 4 UNS LH	137.0	70.0	1034	15,000



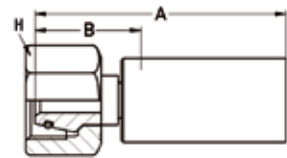
**BSP Female swivel (60° cone):** High strength carbon steel, zinc plated.

#	Ø				📏	A	B	H	🕒	
	DN	size	mm	inch					bar	psi
192LX-4-03	5	-03	4.8	3/16	G 1/4	64.0	25.0	22.0	1800	26,100
192LX-6-05	8	-05	7.9	5/16	G 3/8	69.0	25.0	27.0	1500	21,750
192LX-8-06	10	-06	9.5	3/8	G 1/2	66.0	22.0	30.0	1400	20,300
192LX-8-08	12	-08	12.7	1/2	G 1/2	75.0	21.0	32.0	1300	18,850
192LX-16-12	20	-12	19.0	3/4	G 1	77.0	24.0	41.0	1000	14,500
192LX-20-16	25	-16	25.1	1	G 1 1/4	78.0	25.0	50.0	900	13,050



**Metric female swivel heavy series with O-ring:** High strength carbon steel, zinc plated.

#	Ø				📏	A	B	H	🕒	
	DN	size	mm	inch					bar	psi
1C9LX-16-04	6	-04	6.4	1/4	M24 x 1.5	70.0	39.0	30.0	1640	23,780
1C9LX-14-06	10	-06	9.5	3/8	M22 x 1.5	75.0	30.0	30.0	1400	20,300
1C9LX-16-08	12	-08	12.7	1/2	M24 x 1.5	88.0	34.0	32.0	1300	18,850
1C9LX-25-12	20	-12	19.0	3/4	M36 x 2	92.0	39.0	46.0	1000	14,500
1C9LX-30-16	25	-16	25.4	1	M42 x 2	98.0	45.0	50.0	900	13,050



**Please Note:** Variety of fittings in mild steel or stainless steel available, other fittings available on request. We reserve the right to make technical changes without notice.

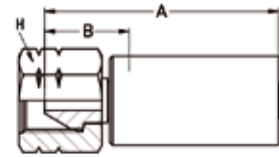
# 2440D / 2440N

## HYDRAULIC & WATER JETTING



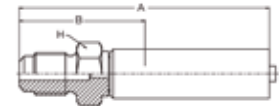
**Type "M" female swivel:** Stainless steel.

#						A	B			
	DN	size	mm	inch					mm	mm
6AYLX-6-2AC	4	-025	4.0	5/32	9/16 - 18 UNF	64.0	33.0	17.0	2200	31,900
1AYLX-6-03C	5	-03	4.8	3/16	9/16 - 18 UNF	67.0	26.0	22.0	1800	26,100
1AYLX-8-05C	8	-05	7.9	5/16	3/4 - 16 UNF	70.0	31.0	27.0	1500	21,750
1AYLX-8-06C	10	-06	9.5	3/8	3/4 - 16 UNF	70.0	25.0	27.0	1400	20,300
1AYLX-11-08C	12	-08	12.7	1/2	1 - 12 UNF	81.0	27.0	32.0	1300	18,850
1AYLX-16-12C	20	-12	19.0	3/4	1 5/16 - 12 UNF	82.0	29.0	41.0	1000	14,500
6AYLX-16-16C	25	-16	25.4	1	1 5/16 - 12 UNF	139.0	52.0	38.0	900	13,050



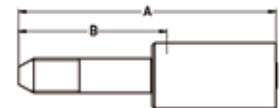
**BSP Male (120° cone):** High strength carbon steel, zinc plated.

#						A	B			
	DN	size	mm	inch					mm	mm
1YBLX-4-03	5	-03	4.8	3/16	G 1/4	78.5	39.5	17.0	1800	26,100



**High pressure tube nipple:** Special materials. C: Stainless Steel.

#						A	B		
	DN	size	mm	inch				mm	mm
1YALX-1-025	4	-025	4.0	5/32	1/4 - 28 UNF-LH	87.0	50.0	2200	31,900
1YALX-1-025C	4	-025	4.0	5/32	1/4 - 28 UNF-LH	87.0	50.0	2200	31,900
1YALX-3-025	4	-025	4.0	5/32	3/8 - 24 UNF-LH	89.0	50.0	2200	31,900
1YALX-1-03	5	-03	4.8	3/16	1/4 - 28 UNF-LH	92.0	53.0	1800	26,100
1YALX-1-03C	5	-03	4.8	3/16	1/4 - 28 UNF-LH	92.0	53.0	1800	26,100
1YALX-3-03	5	-03	4.8	3/16	3/8 - 24 UNF-LH	99.0	57.0	1800	26,100
1YALX-3-03C	5	-03	4.8	3/16	3/8 - 24 UNF-LH	99.0	57.0	1800	26,100
1YALX-6-03	5	-03	4.8	3/16	9/16 - 18 UNF-LH	108.0	78.0	1800	26,100
1YALX-6-03C	5	-03	4.8	3/16	9/16 - 18 UNF-LH	108.0	78.0	1800	26,100
1YALX-3-04	6	-04	6.4	1/4	3/8 - 24 UNF-LH	102.0	58.0	1640	23,780
1YALX-6-04	6	-04	6.4	1/4	9/16 - 18 UNF-LH	112.0	67.0	1640	23,780
1YALX-3-05C	8	-05	7.9	5/16	3/8 - 24 UNF-LH	103.0	59.0	1500	21,750
1YALX-6-05	8	-05	7.9	5/16	9/16 - 18 UNF-LH	110.0	66.0	1500	21,750
1YALX-6-05C	8	-05	7.9	5/16	9/16 - 18 UNF-LH	110.0	66.0	1500	21,750
1YALX-6-06	10	-06	9.5	3/8	9/16 - 18 UNF-LH	106.0	62.0	1400	20,300



For high pressure Parker Tema couplings. Refer to couplings and accessories section on page 215.



**Please Note:** Variety of fittings in mild steel or stainless steel available, other fittings available on request. We reserve the right to make technical changes without notice.