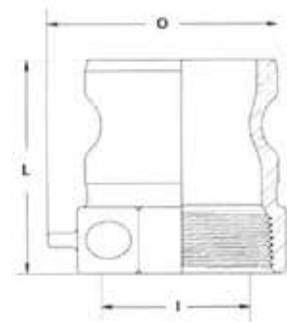




# INSTA-LOCK™ TYPE A MALE ADAPTOR X FEMALE BSP THREAD

## Product specifications

Size inch	Aluminum	Stainless Steel	Distance chain lug extends from body inch	Overall Length (L) inch	Max. width across adaptor (O) inch	Minimum ID (I) inch
1/2	A050AL	A050SS	0.375	1.656	1.500	0.500
3/4	A075AL	A075SS	0.375	1.656	1.688	0.781
1	A100AL	A100SS	0.375	2.163	1.804	0.875
1 1/4	A125AL	A125SS	0.375	2.473	2.237	1.063
1 1/2	A150AL	A150SS	0.375	2.531	2.368	1.375
2	A200AL	A200SS	0.375	2.781	2.909	1.750
2 1/2	A250AL	A250SS	0.375	3.093	3.585	2.187
3	A300AL	A300SS	0.375	3.281	4.009	2.812
4	A400AL	A400SS	0.375	3.528	5.257	3.750
5	A500AL	A500SS	0.375	3.813	6.438	4.688
6	A600AL	A600SS	0.375	3.656	7.688	5.750



Also available in NPT Thread ex USA.

**Note:** Contitech® Insta-Lock fittings are never to be used in steam or compressed air service.

## APPLICATIONS

Type A fitting is commonly threaded onto a pipe, threaded hose end or manifold system, which is connected and disconnected on a regular basis. Insta-Lock™ fittings are designed for liquids and dry bulk. Consult the chemical resistance guide for specific chemical recommendations.

## MATERIALS

Aluminum, 316# stainless steel and brass.

## PRESSURE RATING

Sizes 1/2"-2", 250 psi; sizes 2 1/2"-4", 150 psi; sizes 5"-6", 75 psi. Recommended working pressure ratings based on ambient temperature 70°F (21°C).

## CONSTRUCTION

**Branding:** Contitech® A200SS.



**Please Note:** We reserve the right to make technical changes without notice.