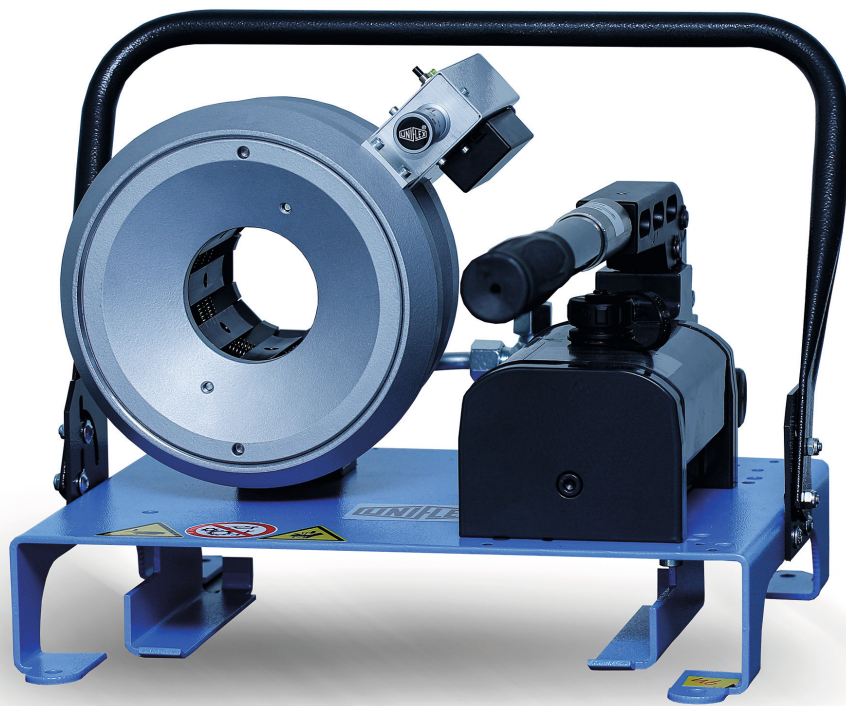


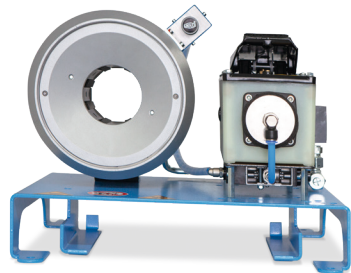


Must workshops and mobile service teams do without the power and reliability of large stationary crimpers? UNIFLEX's answer is a definite "no". Our compact, multi-purpose workshop crimpers prove that the advantages of the legendary slide bearing technology can also be used in light-weight, inexpensive equipment that will fit into almost any vehicle and workshop.

The SH 2 series models offer an optimal force-to-weight ratio of 1" 4 SP at a weight of 29 kg, a large opening stroke up to 22 mm (0.87") and a maximum pressing range up to 63 mm (2.48").



SH 2 MH 2



SH 2 P



SH 2 A



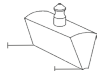
SH 2 M H2

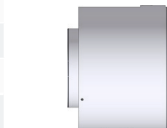
SH 2 M Ecoline

SH 2 P

SH 2 A

SH 2 LA

Technical Data	SH 2 M H2	SH 2 M Ecoline	SH 2 P	SH 2 A	SH 2 LA	Type of dies																												
Crimp force (kN/Ton)	900/90	900/90	770/77	900/90	450/45	 263 <table border="1"> <thead> <tr> <th>Ø mm</th> <th>mm</th> </tr> </thead> <tbody> <tr><td>6.8</td><td>40</td></tr> <tr><td>9</td><td>75</td></tr> <tr><td>12</td><td>75</td></tr> <tr><td>14</td><td>75</td></tr> <tr><td>17</td><td>75</td></tr> <tr><td>20</td><td>75</td></tr> <tr><td>24</td><td>75</td></tr> <tr><td>28</td><td>75</td></tr> <tr><td>32</td><td>75</td></tr> <tr><td>36</td><td>75</td></tr> <tr><td>40</td><td>75</td></tr> <tr><td>44</td><td>75</td></tr> <tr><td>47</td><td>75</td></tr> </tbody> </table>	Ø mm	mm	6.8	40	9	75	12	75	14	75	17	75	20	75	24	75	28	75	32	75	36	75	40	75	44	75	47	75
Ø mm	mm																																	
6.8	40																																	
9	75																																	
12	75																																	
14	75																																	
17	75																																	
20	75																																	
24	75																																	
28	75																																	
32	75																																	
36	75																																	
40	75																																	
44	75																																	
47	75																																	
No grease: 20% less friction	✓	✓	✓	✓	✓																													
SAE R 12/4SP* 1 piece fitting	1¼"	1¼"	1¼"	1¼"	¾"																													
SAE R 15/4SH* 2 piece fitting	1"	1"	1"	1"	⅝"																													
Industrial	1¼"	1¼"	1¼"	1¼"	1¼"																													
90° Elbows	1"	1"	1"	1"	1"																													
Max. Crimp range** (mm/inch)	63 / 2.48	63 / 2.48	63 / 2.48	63 / 2.48	63 / 2.48																													
Opening (mm/inch)	+22 / +19.06	+22 / +19.06	+22 / +19.06	+22 / +19.06	+22 / +19.06																													
Opening without dies (mm/inch)	77 / 3.03	77 / 3.03	77 / 3.03	77 / 3.03	77 / 3.03																													
Master dies length (mm/inch)	75 / 2.95	75 / 2.95	75 / 2.95	75 / 2.95	75 / 2.95																													
Type of dies	263	263	263	263	263																													
Speed (mm/sec)																																		
Close Crimp	-	-	0.9	5.8	2.4																													
Drive	Manual	Manual	Pneumatic ***	1 VAC	1 VAC																													
Oil	0.75 l	0.75 l	2 l	1.5 l	1.5 l																													
L x W x H (mm)	500 x 420 x 440	216 x 165 x 348	380 x 400 x 310	450 x 450 x 350	450 x 450 x 450																													
Weight	32 kg	29 kg	33 kg	41 kg	56 kg																													

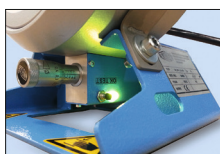


SH = Hollow piston press tool

* According to the fitting. ** With master dies. *** 7 bar/98 psi.

Packages page 28 / Accessories and options page 56

Description



On SH 2 models, an optical signal is given when the crimp measure is reached. The electric and pneumatic variants have an automatic stop function.



Telescopic hand-lever available. Included with SH 2 M machines.



New standard by SH 2 MH and SH 2 M Ecoline with special pump. (The low pressure delivery volume is around three times higher than the standard.) 32/3 cc instead of 11/3 cc



PUM 0.8/3.2-700 bar. The mobile high pressure unit achieves 700 bar: a real magic box!



SH 2 DC