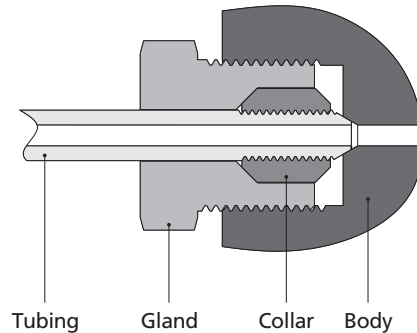


## Features

- Working pressure: 60,000 psig (4137 bar)
- Working temperature range: -423°F to 1200°F (-252°C to 649°C)
- Use with T60 series tubing as standard, tubing sizes available in 1/4", 3/8" and 9/16"
- High tensile 316 stainless steel material
- Every fitting marked with size, material and heat number

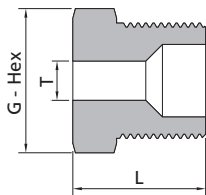
## Construction



## Ordering Information and Dimensions

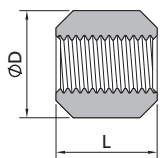
Dimensions are for reference only and are subject to change.

### Glands



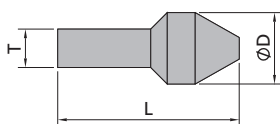
Tube			
T - Tube O.D. in.	Ordering Number	Dimensions, in. (mm)	
		G	L
1/4	SS-HG-HF4	0.63 (15.9)	0.82 (20.8)
3/8	SS-HG-HF6	0.81 (20.6)	1.13 (28.7)
9/16	SS-HG-HF9	1.19 (30.2)	1.50 (38.1)

### Collars



Tube			
T - Tube O.D. in.	Ordering Number	Dimensions, in. (mm)	
		D	L
1/4	SS-HCO-HF4	0.38 (9.6)	0.38 (9.6)
3/8	SS-HCO-HF6	0.50 (12.7)	0.54 (13.7)
9/16	SS-HCO-HF9	0.81 (20.6)	0.62 (15.8)

### Plugs<sup>①</sup>



Tube			
T - Tube O.D. in.	Ordering Number	Dimensions, in. (mm)	
		D	L
1/4	SS-HTP-HF4	0.38 (9.6)	1.04 (26.4)
3/8	SS-HTP-HF6	0.50 (12.7)	1.35 (34.3)
9/16	SS-HTP-HF9	0.81 (20.6)	1.89 (48.0)

<sup>①</sup> When using plug, collar is not required.