

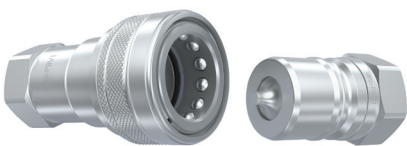


# HYDRAULIC QUICK CONNECT COUPLINGS



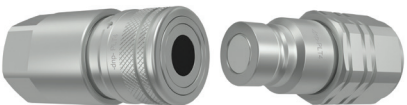
[www.abdex.com](http://www.abdex.com)

# STAINLESS STEEL RANGE



## ISO 7241/B (STAINLESS STEEL)

# Female	# Male	Description	Size inch	 bar	
QCISOB-04-F-BSP	QCISOB-04-M-BSP	ISO 7241/B - PBV1 1/4" ISO B Quick Release in Stainless Steel	1/4	250	BSP
QCISOB-04-F-NPT	QCISOB-04-M-NPT	ISO 7241/B - PBV1 1/4" ISO B Quick Release in Stainless Steel	1/4	250	NPT
QCISOB-06-F-BSP	QCISOB-06-M-BSP	ISO 7241/B - PBV1 3/8" ISO B Quick Release in Stainless Steel	3/8	250	BSP
QCISOB-06-F-NPT	QCISOB-06-M-NPT	ISO 7241/B - PBV1 3/8" ISO B Quick Release in Stainless Steel	3/8	250	NPT
QCISOB-08-F-BSP	QCISOB-08-M-BSP	ISO 7241/B - PBV1 1/2" ISO B Quick Release in Stainless Steel	1/2	250	BSP
QCISOB-08-F-NPT	QCISOB-08-M-NPT	ISO 7241/B - PBV1 1/2" ISO B Quick Release in Stainless Steel	1/2	250	NPT
QCISOB-12-F-BSP	QCISOB-12-M-BSP	ISO 7241/B - PBV1 3/4" ISO B Quick Release in Stainless Steel	3/4	250	BSP
QCISOB-12-F-NPT	QCISOB-12-M-NPT	ISO 7241/B - PBV1 3/4" ISO B Quick Release in Stainless Steel	3/4	250	NPT
QCISOB-16-F-BSP	QCISOB-16-M-BSP	ISO 7241/B - PBV1 1" ISO B Quick Release in Stainless Steel	1	250	BSP
QCISOB-16-F-NPT	QCISOB-16-M-NPT	ISO 7241/B - PBV1 1" ISO B Quick Release in Stainless Steel	1	250	NPT



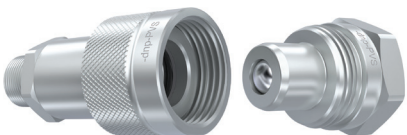
## ISO16028 FLAT FACE (STAINLESS STEEL)

# Female	# Male	Description	Size inch	 bar	
PLTX.0606.012	PLTX.0606.013	ISO 16028 - FLAT FACE - PLT4 1/4" Flat Face Quick Release in Stainless Steel	1/4	400	NPT
PLTX.1010.012	PLTX.1010.013	ISO 16028 - FLAT FACE - PLT4 3/8" Flat Face Quick Release in Stainless Steel	3/8	350	NPT
PLTX.1313.012	PLTX.1313.013	ISO 16028 - FLAT FACE - PLT4 1/2" Flat Face Quick Release in Stainless Steel	1/2	350	NPT



## FLAT FACE 71 SERIES INTERCHANGE (STAINLESS STEEL)

# Female	# Male	Description	Size inch	 bar	
PLSX.0606.012	PLSX.0606.013	Flat Face - 71 Series Interchange Quick Release in Stainless Steel	1/4	350 Dynamic / 700 Static	NPT
PLSX.1010.012	PLSX.1010.013	Flat Face - 71 Series Interchange Quick Release in Stainless Steel	3/8	350 Dynamic / 700 Static	NPT
PLSX.1313.012	PLSX.1313.013	Flat Face - 71 Series Interchange Quick Release in Stainless Steel	1/2	350 Dynamic / 700 Static	NPT



## JACKING COUPLINGS BALL TYPE (STAINLESS STEEL)

# Female	# Male	Description	Size inch	 bar	
ABD3140C	ABD3120C	Jacking Coupling - 3/8" Ball Type in Stainless Steel	3/8	700	NPT