

Subsea Hydraulic Directional Control Valves

Features

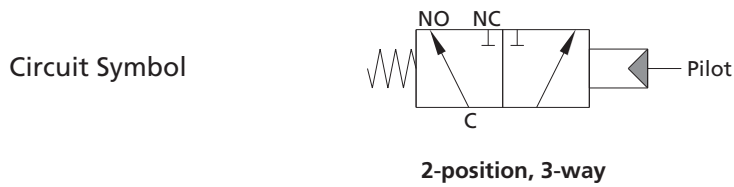
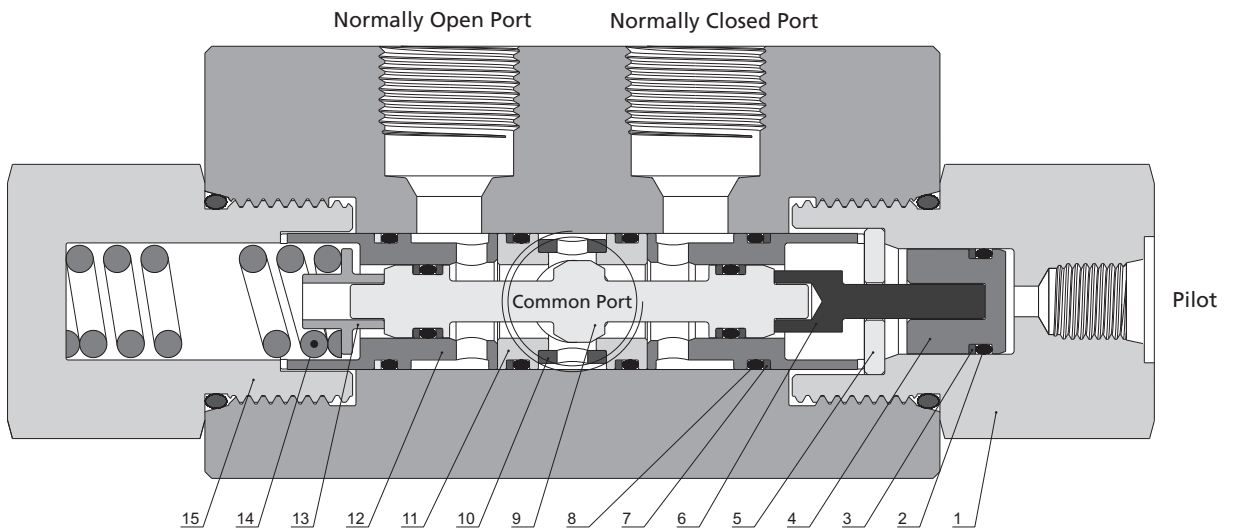
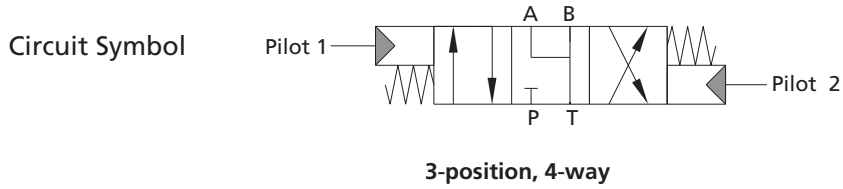
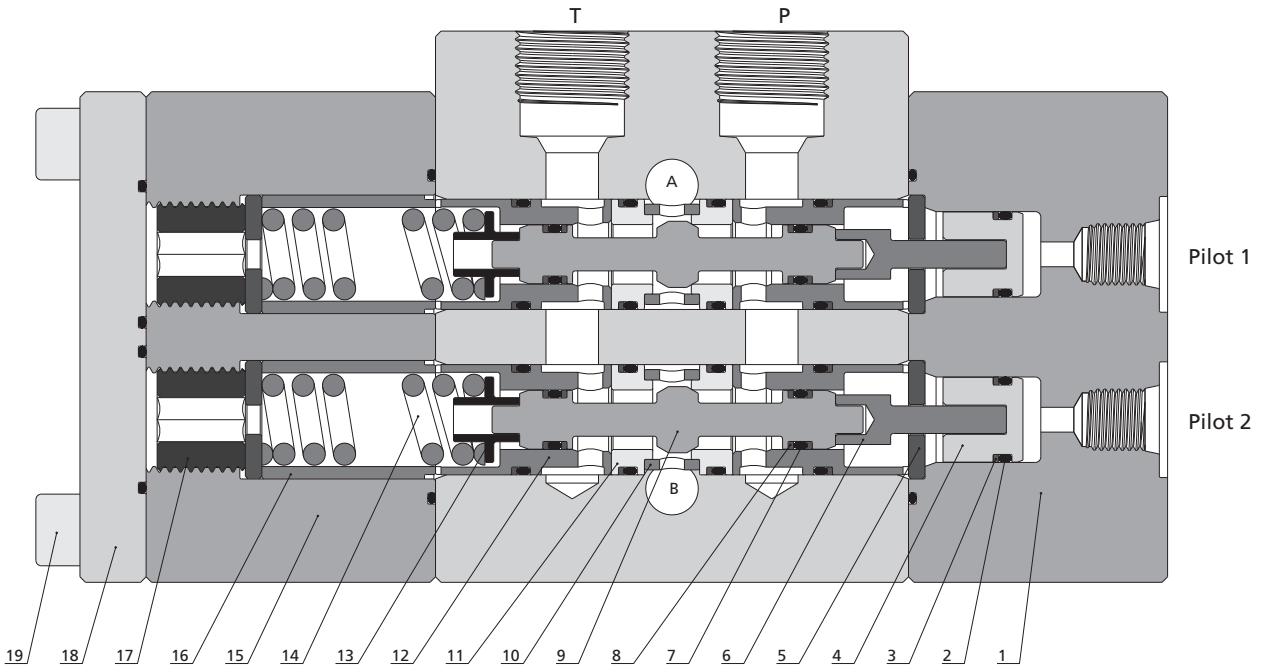
- ⦿ Working pressure up to 20,000 psig (1379 bar)
- ⦿ Pilot working pressure: 3,000 psig (207 bar)
- ⦿ Maximum external pressure: 6,000 psig (414 bar)
- ⦿ NBR O-ring for operation from -10 to 250°F (-23 to 121°C); other O-ring materials available
- ⦿ High tensile 316 stainless steel for valve body
- ⦿ NBR O-rings seal provides excellent oil resistance
- ⦿ Easy to connect, switch off and reverse between different flow channels
- ⦿ Hydraulic remote control for easy operation
- ⦿ Bolt connection for easy disassembly and maintenance
- ⦿ Low impact performance to maximize cycle life
- ⦿ Suitable for application with oil or water
- ⦿ Orifice size: 0.25", 0.375"
- ⦿ Maximum water depth: 13,800 ft. (4200 m)



Fittings
Tubing
Quick Couplings
Line Filters
Valves
Sour Service Products
Subsea Valves
Tools and Installation Instructions
Technical Information
Part Number Crossover Charts

Standard Materials of Construction

Fittings
Tubing
Quick Couplings
Line Filters
Valves
Sour Service Products
Subsea Valves
Tools and Installation Instructions
Technical Information
Part Number Crossover Charts



Item	Component	Material Grade
1	Gland	F316
2	O-Ring	NBR
3	Retaining Ring	PTFE
4	Piston	316 SS
5	Gasket	316 SS
6	Connection Block	316 SS
7	<i>O-Ring</i>	<i>NBR</i>
8	<i>Retaining Ring</i>	<i>PEEK</i>
9	<i>Stem</i>	<i>S17400</i>
10	<i>Pad</i>	<i>S17400</i>
11	<i>Seat</i>	<i>316 SS</i>
12	<i>Bush</i>	<i>S17400</i>
13	Connection Block	316 SS
14	Spring	S17700
15	Gland	F316
16	Bush	S17400
17	Screw	316 SS
18	Gland	F316
19	Locking Screw	316 SS

Wetted components listed in italics.

Fittings

Tubing

Quick Couplings

Line Filters

Valves

Sour Service Products

Subsea Valves

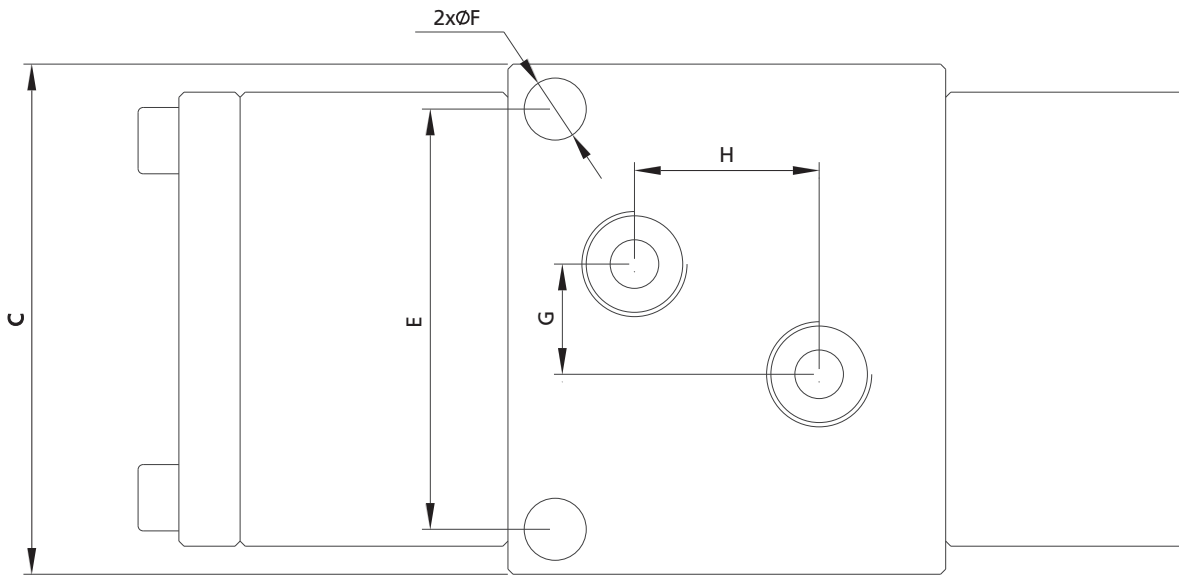
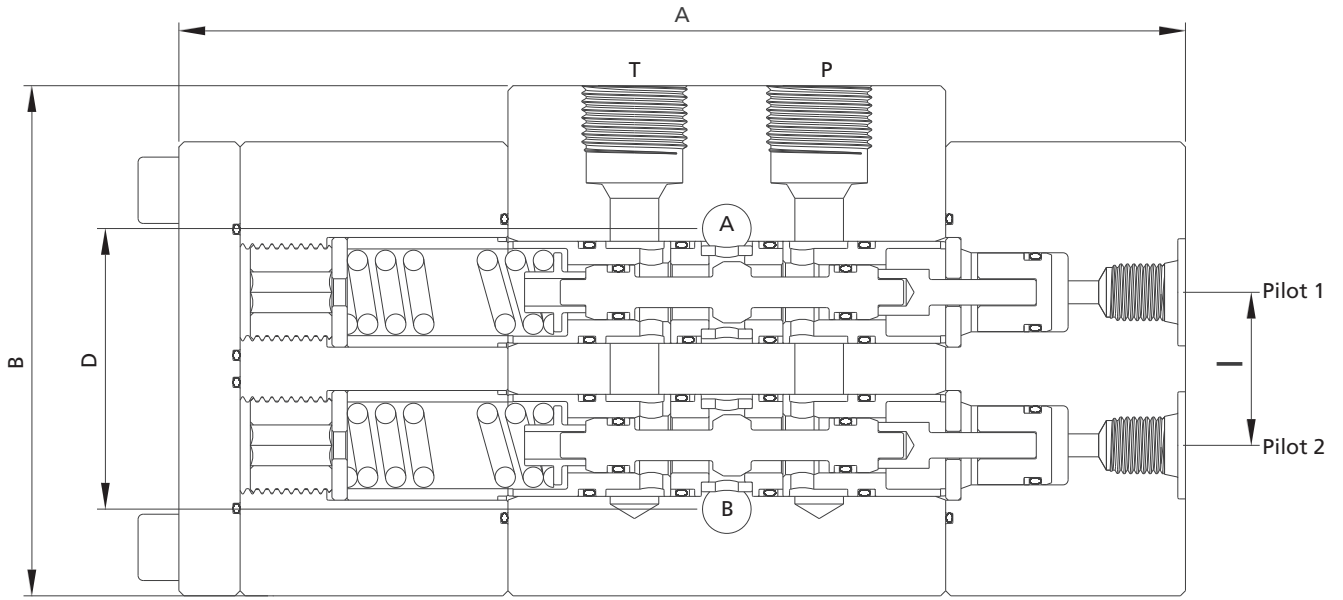
Tools and Installation Instructions

Technical Information

Part Number Crossover Charts

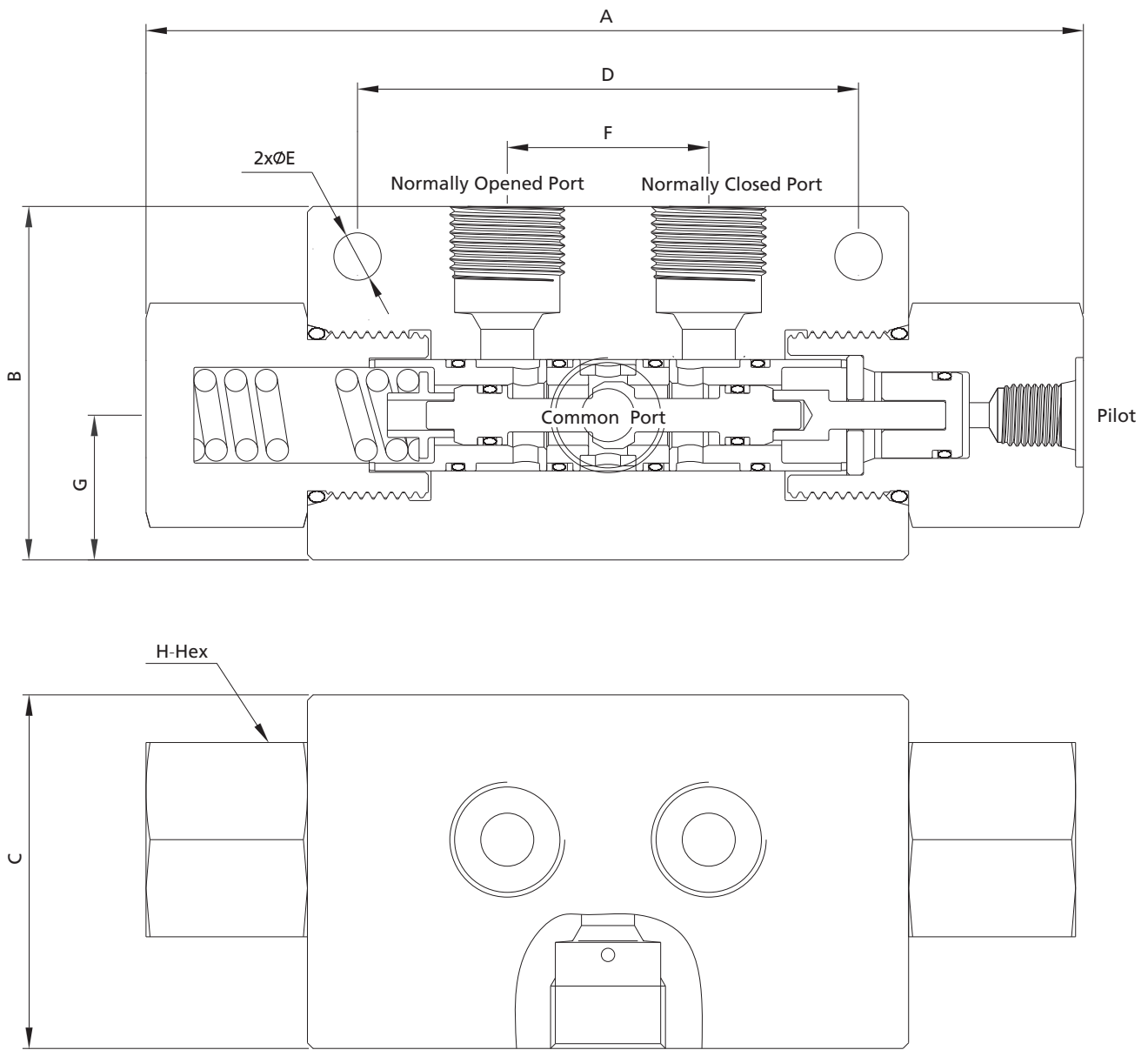
Ordering Information and Dimensions

Fittings
Tubing
Quick Couplings
Line Filters
Valves
Sour Service Products
Subsea Valves
Tools and Installation Instructions
Technical Information
Part Number Crossover Charts



3-position, 4-way

Ordering Number	Dimensions, in. (mm)										Working Pressure psig (bar)
	A	B	C	D	E	F	G	H	I	Orifice	
15SDCSS-3P4W-MF9-US7	6.70 (170.3)	3.50 (88.9)	3.50 (88.9)	1.74 (44.2)	2.82 (71.1)	0.41 (10.5)	0.76 (19.4)	1.13 (28.6)	1.00 (25.4)	0.25 (6.35)	15,000 (1034)
15SDCSS-3P4W-MF9-6-US7	7.20 (183)	3.54 (90)	3.74 (95)	1.26 (32)	3.19 (81)	0.33 (8.5)	1.02 (26)	1.10 (28)	1.10 (28)	0.375 (9.53)	
20SDCSS-3P4W-MF9-6-US7	7.20 (183)	3.78 (96)	4.13 (105)	1.34 (34)	3.50 (89)	0.33 (8.5)	1.02 (26)	1.50 (38)	1.10 (28)	0.375 (9.53)	20,000 (1379)



2-position, 3-way

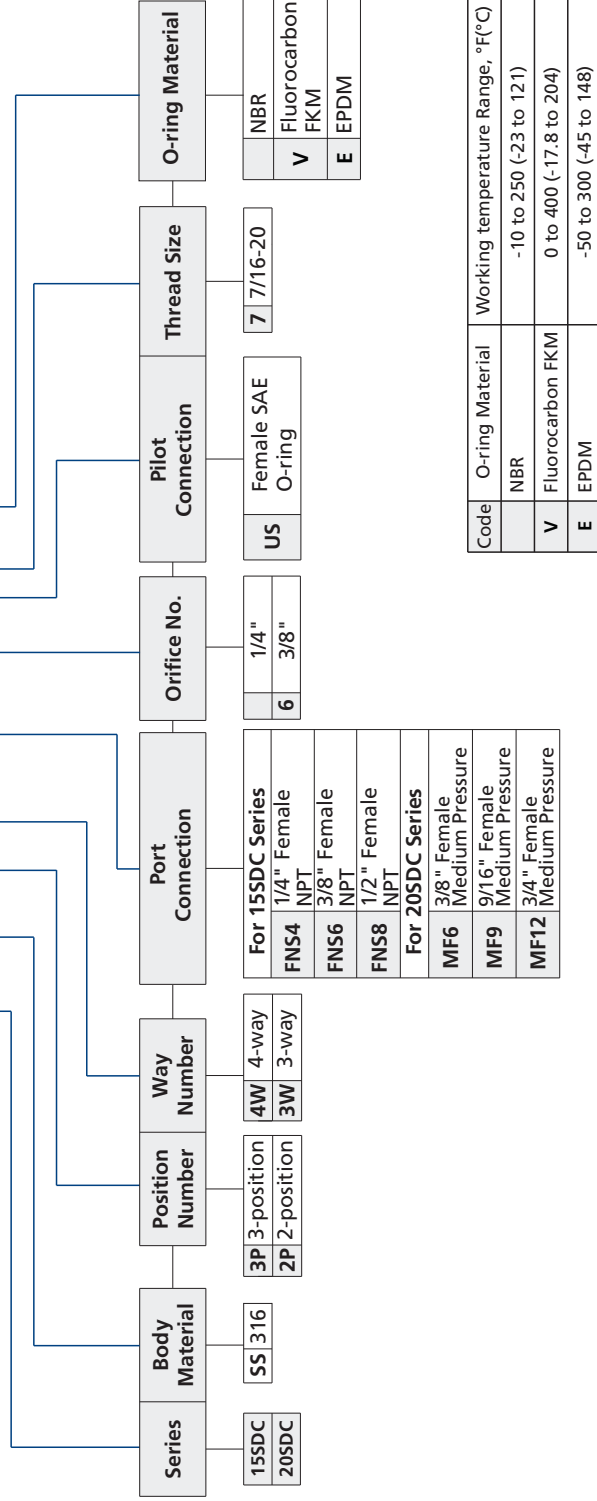
Ordering Number	Dimensions, in. (mm)									Working Pressure psig (bar)
	A	B	C	D	E	F	G	H	Orifice	
15SDCSS-2P3W-MF9-US7	6.40 (162.5)	2.56 (65)	2.56 (65)	3.70 (94)	0.33 (8.5)	1.42 (36)	1.02 (26)	1.63 (41.28)	0.25 (6.35)	15,000 (1034)
15SDCSS-2P3W-MF9-6-US7	6.40 (162.5)	2.56 (65)	2.56 (65)	3.70 (94)	0.33 (8.5)	1.42 (36)	1.02 (26)	1.63 (41.28)	0.375 (9.53)	
20SDCSS-2P3W-MF9-6-US7	6.40 (162.5)	2.56 (65)	2.56 (65)	3.70 (94)	0.33 (8.5)	1.42 (36)	1.02 (26)	1.63 (41.28)	0.375 (9.53)	20,000 (1379)

Fittings
Tubing
Quick Couplings
Line Filters
Valves
Sour Service Products
Subsea Valves
Tools and Installation Instructions
Technical Information
Part Number Crossover Charts

Part Number Crossover Charts	Technical Information	Tools and Installation Instructions	Subsea Valves	Sour Service Products	Valves	Line Filters	Quick Couplings	Tubing	Fittings
------------------------------	-----------------------	-------------------------------------	---------------	-----------------------	--------	--------------	-----------------	--------	----------

Ordering Number Description

20SDCSS - 3P4W - MF9 - 6 - US7 - V



Code	O-ring Material	Working temperature Range, °F(°C)
	NBR	-10 to 250 (-23 to 121)
V	Fluorocarbon FKM	0 to 400 (-17.8 to 204)
E	EPDM	-50 to 300 (-45 to 148)

- NOTES: 1. For more details regarding Medium Pressure connection, please see **Connection Information** on I-02.
 2. "Ordering Number Description" is a reference to understand the combination rules of FITOK product part number.
 Not all combinations are available.