



FLUID TRANSFER TECHNOLOGY

HYDRAULIC QUICK CONNECT COUPLINGS

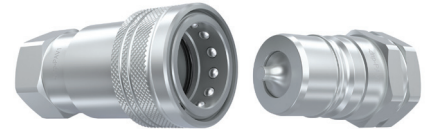


www.abdex.com

CONTENTS

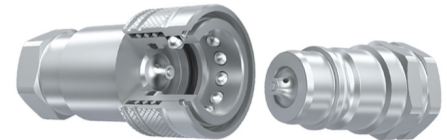
Section	Page
Carbon Steel Range	3-5
ISO 7241/A	3
Probes For Connection Under Pressure (ISO A Norm)	3
ISO 7241/B	3
ISO16028 Flat Face	3
Push Pull	4
Nordic / T-Series Interchange	4
Agricultural Style (Ball Type)	4
Agricultural Style (Poppet Type)	4
Jacking Coupling (Ball Type)	5
Jacking Coupling (Poppet Type)	5
Stainless Steel	5-6
ISO 7241/B (Stainless Steel)	5
ISO16028 Flat Face (Stainless Steel)	5
Flat Face 71 Series Interchange (Stainless Steel)	6
Jacking Coupling (Ball Type) (Stainless Steel)	6
Dust Plugs and Caps	6-7
Dust Plugs / Caps To Suit ISO7241/A	6
Dust Plugs / Caps To Suit ISO16028	6
Dust Plugs / Caps To Suit ISO7241/B	7
Dust Plugs / Caps To Suit Push/Pull	7
Dust Plugs / Caps to suit Push / Pull	7
Interchange List	7

CARBON STEEL RANGE



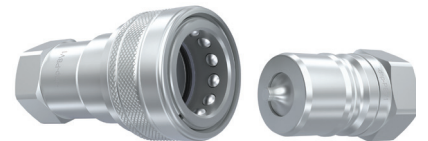
ISO 7241/A

# Female	# Male	Description	Size inch	 bar	
QCISOA-04-F-BSP	QCISOA-04-M-BSP	ISO 7241/A - PAV1 1/4" ISO A Quick Release	1/4	350	BSP
QCISOA-06-F-BSP	QCISOA-06-M-BSP	ISO 7241/A - PAV1 3/8" ISO A Quick Release	3/8	350	BSP
QCISOA-08-F-BSP	QCISOA-08-M-BSP	ISO 7241/A - PAV1 1/2" ISO A Quick Release	1/2	250	BSP
QCISOA-12-F-BSP	QCISOA-12-M-BSP	ISO 7241/A - PAV1 3/4" ISO A Quick Release	3/4	250	BSP
QCISOA-16-F-BSP	QCISOA-16-M-BSP	ISO 7241/A - PAV1 1" ISO A Quick Release	1	250	BSP



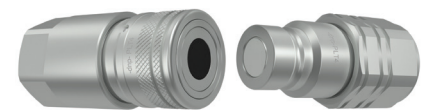
PROBES FOR CONNECTION UNDER PRESSURE (ISO A NORM)

# Female	# Male	Description	Size inch	 bar	
QCISOA-08-F-BSP-UP	QCISOA-08-M-BSP-UP	1/2" Male ISO A Under Pressure x 1/2" BSPF	1/2	250	BSPF
QCISOA-12-F-BSP-UP	QCISOA-12-M-BSP-UP	3/4" Male ISO A Under Pressure x 3/4" BSPF	3/4	250	BSPF



ISO 7241/B

# Female	# Male	Description	Size inch	 bar	
QCISOB-02-F-BSP	QCISOB-02-M-BSP	ISO 7241/B - PBV1 1/8" ISO B Quick Release	1/8	250	BSP
QCISOB-04-F-BSP	QCISOB-04-M-BSP	ISO 7241/B - PBV1 1/4" ISO B Quick Release	1/4	250	BSP
QCISOB-06-F-BSP	QCISOB-06-M-BSP	ISO 7241/B - PBV1 3/8" ISO B Quick Release	3/8	250	BSP
QCISOB-08-F-BSP	QCISOB-08-M-BSP	ISO 7241/B - PBV1 1/2" ISO B Quick Release	1/2	250	BSP
QCISOB-12-F-BSP	QCISOB-12-M-BSP	ISO 7241/B - PBV1 3/4" ISO B Quick Release	3/4	250	BSP
QCISOB-16-F-BSP	QCISOB-16-M-BSP	ISO 7241/B - PBV1 1" ISO B Quick Release	1	250	BSP



ISO 16028 FLAT FACE

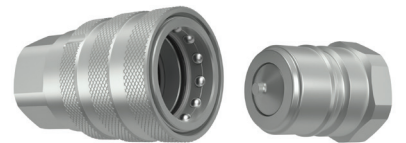
# Female	# Male	Description	Size inch	 bar	
QCFF16028-04-04-F-BSP	QCFF16028-04-04-M-BSP	ISO 16028 - FLAT FACE - PLT4 1/4" x 1/4" BSPF Flat Face Quick Release	1/4	400	BSP
QCFF16028-06-06-F-BSP	QCFF16028-06-06-M-BSP	ISO 16028 - FLAT FACE - PLT4 3/8" x 3/8" BSPF Flat Face Quick Release	3/8	350	BSP
QCFF16028-06-08-F-BSP	QCFF16028-06-08-M-BSP	ISO 16028 - FLAT FACE - PLT4 3/8" x 1/2" BSPF Flat Face Quick Release	3/8	350	BSP
QCFF16028-08-08-F-BSP	QCFF16028-08-08-M-BSP	ISO 16028 - FLAT FACE - PLT4 1/2" x 1/2" BSPF Flat Face Quick Release	1/2	350	BSP
QCFF16028-08-12-F-BSP	QCFF16028-08-12-M-BSP	ISO 16028 - FLAT FACE - PLT4 1/2" x 3/4" BSPF Flat Face Quick Release	1/2	350	BSP
QCFF16028-08-10-F-UNF	QCFF16028-08-10-M-UNF	ISO 16028 - FLAT FACE - 1/2" x 7/8" UNOF Flat Face Quick Release	1/2	350	UNF
QCFF16028-08-12-F-UNF	QCFF16028-08-12-M-UNF	ISO 16028 - FLAT FACE - 1/2" x 1-1/16" UNOF Flat Face Quick Release	1/2	350	UNF
QCFF16028-12-12-F-UNF	QCFF16028-12-12-M-UNF	ISO 16028 - FLAT FACE - 3/4" x 1-1/16" UNOF Flat Face Quick Release	3/4	350	UNF
QCFF16028-12-12-F-BSP	QCFF16028-12-12-M-BSP	ISO 16028 - FLAT FACE - PLT4 3/4" x 3/4" BSPF Flat Face Quick Release	3/4	350	BSP
QCFF16028-12-16-F-BSP	QCFF16028-12-16-M-BSP	ISO 16028 - FLAT FACE - PLT4 3/4" x 1" BSPF Flat Face Quick Release	3/4	350	BSP
QCFF16028-16-16-F-BSP	QCFF16028-16-16-M-BSP	ISO 16028 - FLAT FACE - PLT4 1" x 1" BSPF Flat Face Quick Release	1	350	BSP

CARBON STEEL RANGE



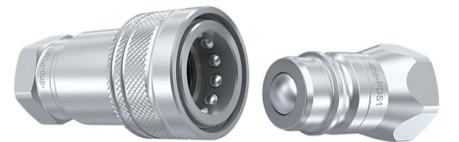
PUSH PULL

# Female	# Male	Description	Size inch	 bar	 BSP
QC7241A-08-F-BSP	-	PUSH PULL - POPPET - PPV1 1/2" Push Pull Poppet Quick Release Coupling	1/2	250	BSP



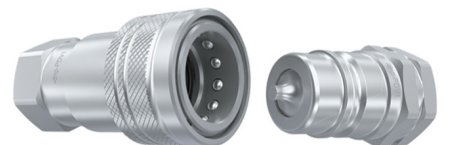
NORDIC / T-SERIES INTERCHANGE

# Female	# Male	Description	Size inch	 bar	 BSP
QCPT-04-F-BSP	QCPT-04-M-BSP	NORDIC / T SERIES INTERCHANGE - PTV1 1/4" Quick Release Coupling	1/4	400	BSP
QCPT-06-F-BSP	QCPT-06-M-BSP	NORDIC / T SERIES INTERCHANGE - PTV1 3/8" Quick Release Coupling	3/8	370	BSP
QCPT-08-F-BSP	QCPT-08-M-BSP	NORDIC / T SERIES INTERCHANGE - PTV1 1/2" Quick Release Coupling	1/2	350	BSP
QCPT-12-F-BSP	QCPT-12-M-BSP	NORDIC / T SERIES INTERCHANGE - PTV1 3/4" Quick Release Coupling	3/4	300	BSP
QCPT-16-F-BSP	QCPT-16-M-BSP	NORDIC / T SERIES INTERCHANGE - PTV1 1" Quick Release Coupling	1	300	BSP



AGRICULTURAL STYLE (BALL TYPE)

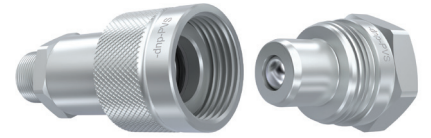
# Female	# Male	Description	Size inch	 bar	 BSP
QCAG-08-F-BSP	QCAG-08-M-BSP	1/2" Agricultural Manual Connect Quick Coupling x 1/2" BSP	1/2	200	BSP
QCAG-12-F-BSP	QCAG-12-M-BSP	3/4" Agricultural Manual Connect Quick Coupling x 3/4" BSP	3/4	200	BSP



AGRICULTURAL STYLE (POPPET TYPE)

# Female	# Male	Description	Size inch	 bar	 BSP
QCNV-04-F-BSP	QCNV-04-M-BSP	NV Style Coupling 1/4" BSP	1/4	700	BSP
QCNV-06-F-BSP	QCNV-06-M-BSP	NV Style Coupling 3/8" BSP	3/8	700	BSP
QCNV-08-F-BSP	QCNV-08-M-BSP	NV Style Coupling 1/2" BSP	1/2	700	BSP
QCNV-12-F-BSP	QCNV-12-M-BSP	NV Style Coupling 3/4" BSP	3/4	700	BSP
QCNV-16-F-BSP	QCNV-16-M-BSP	NV Style Coupling 1" BSP	1	700	BSP

CARBON / STAINLESS STEEL RANGE



JACKING COUPLING (BALL TYPE)

# Female	# Male	Description	Size		
			inch	bar	
ABD2140-02	ABD2120-02	Jacking Coupling - 1/8" Ball Type	1/8	700	NPT Male / Female
ABD2140	ABD2120	Jacking Coupling - 1/4" Ball Type	1/4	700	NPT Male / Female
ABD2141	ABD2121	Jacking Coupling - 1/4" Ball Type	1/4	700	NPT Female / Male
ABD3140	ABD3120	Jacking Coupling - 3/8" Ball Type	3/8	700	NPT Male / Female
ABD3141	ABD3121	Jacking Coupling - 3/8" Ball Type	3/8	700	NPT Female / Male



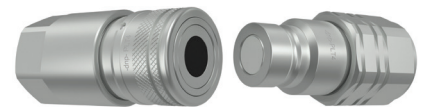
JACKING COUPLING (POPPET TYPE)

# Female	# Male	Description	Size		
			inch	bar	
ABD3142	ABD3122	Jacking Coupling - 3/8" Poppet Type	3/8	700	NPT Male / Female



ISO 7241/B (STAINLESS STEEL)

# Female	# Male	Description	Size		
			inch	bar	
QCISOB-04-F-BSP-SS	QCISOB-04-M-BSP-SS	ISO 7241/B - PBV1 1/4" ISO B Quick Release in Stainless Steel	1/4	250	BSP
QCISOB-04-F-NPT-SS	QCISOB-04-M-NPT-SS	ISO 7241/B - PBV1 1/4" ISO B Quick Release in Stainless Steel	1/4	250	NPT
QCISOB-06-F-BSP-SS	QCISOB-06-M-BSP-SS	ISO 7241/B - PBV1 3/8" ISO B Quick Release in Stainless Steel	3/8	250	BSP
QCISOB-06-F-NPT-SS	QCISOB-06-M-NPT-SS	ISO 7241/B - PBV1 3/8" ISO B Quick Release in Stainless Steel	3/8	250	NPT
QCISOB-08-F-BSP-SS	QCISOB-08-M-BSP-SS	ISO 7241/B - PBV1 1/2" ISO B Quick Release in Stainless Steel	1/2	250	BSP
QCISOB-08-F-NPT-SS	QCISOB-08-M-NPT-SS	ISO 7241/B - PBV1 1/2" ISO B Quick Release in Stainless Steel	1/2	250	NPT
QCISOB-12-F-BSP-SS	QCISOB-12-M-BSP-SS	ISO 7241/B - PBV1 3/4" ISO B Quick Release in Stainless Steel	3/4	250	BSP
QCISOB-12-F-NPT-SS	QCISOB-12-M-NPT-SS	ISO 7241/B - PBV1 3/4" ISO B Quick Release in Stainless Steel	3/4	250	NPT
QCISOB-16-F-BSP-SS	QCISOB-16-M-BSP-SS	ISO 7241/B - PBV1 1" ISO B Quick Release in Stainless Steel	1	250	BSP
QCISOB-16-F-NPT-SS	QCISOB-16-M-NPT-SS	ISO 7241/B - PBV1 1" ISO B Quick Release in Stainless Steel	1	250	NPT



ISO 16028 FLAT FACE - (STAINLESS STEEL)

# Female	# Male	Description	Size		
			inch	bar	
QCFF16028-04-F-NPT-SS	QCFF16028-04-M-NPT-SS	ISO 16028 - FLAT FACE - PLT4 1/4" x 1/4" NPT Flat Face Quick Release	1/4	350	NPT
QCFF16028-06-F-NPT-SS	QCFF16028-06-M-NPT-SS	ISO 16028 - FLAT FACE - PLT4 3/8" x 3/8" NPT Flat Face Quick Release	3/8	350	NPT
QCFF16028-08-F-NPT-SS	QCFF16028-08-M-NPT-SS	ISO 16028 - FLAT FACE - PLT4 1/2" x 1/2" NPT Flat Face Quick Release	1/2	350	NPT
QCFF16028-04-F-BSP-SS	QCFF16028-04-M-BSP-SS	ISO 16028 - FLAT FACE - PLT4 1/4" x 1/4" BSPP Flat Face Quick Release	1/4	350	BSPP
QCFF16028-06-F-BSP-SS	QCFF16028-06-M-BSP-SS	ISO 16028 - FLAT FACE - PLT4 3/8" x 3/8" BSPP Flat Face Quick Release	3/8	350	BSPP
QCFF16028-08-F-BSP-SS	QCFF16028-08-M-BSP-SS	ISO 16028 - FLAT FACE - PLT4 1/2" x 1/2" BSPP Flat Face Quick Release	1/2	350	BSPP

STAINLESS STEEL RANGE



FLAT FACE 71 SERIES INTERCHANGE (STAINLESS STEEL)

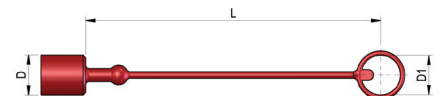
# Female	# Male	Description	Size inch	 bar	 NPT
QCFF71-04-F-NPT-SS	QCFF71-04-M-NPT-SS	Flat Face - 71 Series Interchange Quick Release in Stainless Steel	1/4	350 Dynamic / 700 Static	NPT
QCFF71-06-F-NPT-SS	QCFF71-06-M-NPT-SS	Flat Face - 71 Series Interchange Quick Release in Stainless Steel	3/8	350 Dynamic / 700 Static	NPT
QCFF71-08-F-NPT-SS	QCFF71-08-M-NPT-SS	Flat Face - 71 Series Interchange Quick Release in Stainless Steel	1/2	350 Dynamic / 700 Static	NPT



JACKING COUPLINGS BALL TYPE (STAINLESS STEEL)

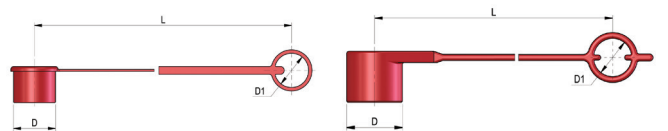
# Female	# Male	Description	Size inch	 bar	 NPT
ABD3140C	ABD3120C	Jacking Coupling - 3/8" Ball Type in Stainless Steel	3/8	700	NPT

DUST PLUGS / CAPS TO SUIT ISO7241/A



# Female	# Male	Description	Size inch
QCISOA-04-PLUG	QCISOA-04-CAP	ISO 7241/A - PAV1 1/4" Dust Plug / Cap	1/4
QCISOA-06-PLUG	QCISOA-06-CAP	ISO 7241/A - PAV1 3/8" Dust Plug / Cap	3/8
QCISOA-12-PLUG	QCISOA-12-CAP	ISO 7241/A - PAV1 3/4" Dust Plug / Cap	3/4
QCISOA-16-PLUG	QCISOA-16-CAP	ISO 7241/A - PAV1 1" Dust Plug / Cap	1

DUST PLUGS / CAPS TO SUIT ISO16028 FLAT FACE



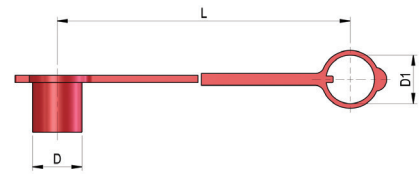
# Female	# Male	Description	Size inch
QCFF16028-04-PLUG	QCFF16028-04-CAP	ISO 16028 - FLAT FACE - PLT4 1/4" Dust Plug / Cap	1/4
QCFF16028-06-PLUG	QCFF16028-06-CAP	ISO 16028 - FLAT FACE - PLT4 3/8" Dust Plug / Cap	3/8
QCFF16028-08-PLUG	QCFF16028-08-CAP	ISO 16028 - FLAT FACE - PLT4 1/2" Dust Plug / Cap	1/2
QCFF16028-12-PLUG	QCFF16028-12-CAP	ISO 16028 - FLAT FACE - PLT4 3/4" Dust Plug / Cap	3/4
QCFF16028-16-PLUG	QCFF16028-16-CAP	ISO 16028 - FLAT FACE - PLT4 1" Dust Plug / Cap	1

DUST PLUGS / CAPS



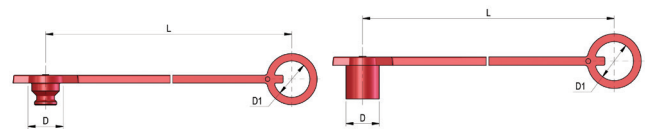
DUST PLUGS / CAPS TO SUIT ISO7241/B

# Female	# Male	Description	Size inch
QCISOB-04-PLUG	QCISOB-04-CAP	ISO 7241/B - PBV1 1/4" Dust Plug / Cap	1/4
QCISOB-06-PLUG	QCISOB-06-CAP	ISO 7241/B - PBV1 3/8" Dust Plug / Cap	3/8
QCISOB-08-PLUG	QCISOB-08-CAP	ISO 7241/B - PBV1 1/2" Dust Plug / Cap	1/2
QCISOB-12-PLUG	QCISOB-12-CAP	ISO 7241/B - PBV1 3/4" Dust Plug / Cap	3/4
QCISOB-16-PLUG	QCISOB-16-CAP	ISO 7241/B - PBV1 1" Dust Plug / Cap	1



DUST PLUGS / CAPS TO SUIT PUSH / PULL

# Female	# Male	Description	Size inch
QCISOA-08-PLUG	QCISOA-08-CAP	ISO 7241/A - PAV1 1/2" Dust Plug / Cap	1/2



DUST PLUGS / CAPS TO SUIT NORDIC / T-SERIES INTERCHANGE

# Female	# Male	Description	Size inch
QCPT-06-PLUG	QCPT-06-CAP	NORDIC / T SERIES INTERCHANGE - PTV1 3/8" Dust Plug / Cap	3/8
QCPT-08-PLUG	QCPT-08-CAP	NORDIC / T SERIES INTERCHANGE - PTV1 1/2" Dust Plug / Cap	1/2
QCPT-12-PLUG	QCPT-12-CAP	NORDIC / T SERIES INTERCHANGE - PTV1 3/4" Dust Plug / Cap	3/4
QCPT-16-PLUG	QCPT-16-CAP	NORDIC / T SERIES INTERCHANGE - PTV1 1" Dust Plug / Cap	1

INTERCHANGE LIST

Standard / Manufacturer	DNP	STUCCHI	FASTER	HANSEN	PARKER	RYCO	SAFEWAY
ISO 7241/A	PAV1	BIR	ANV	HA	6600, 2000	R81/82	S56
ISO 7241/B	PBV1	IRB	HNV	HK	60		S10
ISO 7241/A Push Pull	PPV1	1RS/I				R91 & R86	
NORDIC / T-SERIES	PTV1	IRC			NORDIC / T-SERIES		
ISO16028	PLT4	FIRG/A	2FF1 / FFN38	QA	FF	R110	FF49



FLUID TRANSFER TECHNOLOGY

WWW.ABDEX.COM

Abdex Industries Pty Ltd
8/315 Archerfield Road,
Richlands, QLD, 4077.
T: (07) 3185 2788
E: sales@abdex.com.au

Abdex Industries Pty Ltd
27 Metcalf Street, Dandenong South,
Victoria, 3175 Australia.
T: (03) 39796 3044
E: sales@abdex.com.au

Abdex Industries Pty Ltd
260 Allen Road, Forrestdale,
Western Australia 6112, Australia.
T: (08) 9418 3044
E: sales@abdex.com.au

Abdex Hose & Couplings Ltd
Unit 10a Clarke Road, Bletchley
Milton Keynes, MK1 1LG, England.
T: +44 (0) 1525 377 770
E: sales@abdex.co.uk

Abdex PTE Ltd
1 Sunview Road, Eco-tech@Sunview
#07-37 Singapore 627615
T: +65 9753 7478
E: sales@abdex.sg