



UG 32 Mobileline



UG 32 Ecoline



UG 32 S

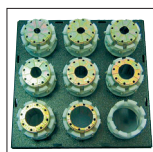
Technical data	UG 32 Mobileline	UG 32 Ecoline	UG 32 S
Crimp force (kN / Ton)	250	250	350
Greased machine	✓	✓	✓
Control	Control A	Control A	Control A
SAE R 15 / 4SH 1 piece fitting *	2"	2"	2"
SAE R15 / 4SH 2 piece fitting *	1 ½"	1 ½"	2"
SAE R12 / 4SP 2 piece fitting *	2"	2"	2"
Industrial	3"	3"	3"
90° Elbows	2"	2"	2"
Crimp range	100 mm	100 mm	102 mm
Opening	+ 41 mm	+ 41 mm	+40 mm
Opening without dies	143 mm	143 mm	143 mm
Master dies length (mm)	110 mm	110 mm	110 mm
Type of dies	239 - xx / 266	239 - xx / 266	239 - xx / 266
Speed (mm/sec)			
Close	20/1,1	30/1,5	30/2,3
Crimp	0,3	1,5	1,1
Open	6,5/30	8,7/30	15,4/30
Noise level	69 dBA	69 dBA	69 dBA
Drive	1,8 kW	3 kW	4 kW
Oil	4 L	35 L	50 L
L x W x H (mm)	505 x 430 x 490	600 x 550 x 750	700 x 550 x 710
Weight	145 kg	190 kg	260 kg
Options			
12 VDC / 24 VDC	✓	-	-
1 Phase	✓	✓	✓
3 Phase	-	✓	✓

* According to the fitting. ** Intermediate dies not required.

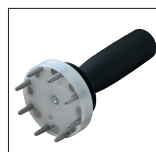
Type of dies		
Ø mm	-mm-	-mm-
6,8	50	
9	50	
10	50	
12	65	
14	65	
16	65	
17	65	
19	65	
20	65	
22	65	
24	65	
26	65	
28	80	
30	80	
31	80	
32	80	
36	80	
38	80	
39	80	
40	80	
44	80	
47	100	
50	100	
54	100	
57	100	
62	100	110
67		110
71		110
74		110
78		110
84		110
86		110
92		110

We reserve the right to make technical changes without notice. Options are machine parts that can only be ordered while buying the machine.

Package



QDS 239 B



QDC 239.5

Package = Machine

+ PB Ø 17, 20, 24, 28, 32, 40, 44, 50, 57, 71

+ 266.239L

+ QDC 239.5

+ QDS 239 B

